

ViewVS

Visual Image Analysis

ViewVS is designed to meet the needs of those collecting and analyzing calibrated color imagery. Whether your application is digital photography or signature management, ViewVS offers a feature rich set of tools.

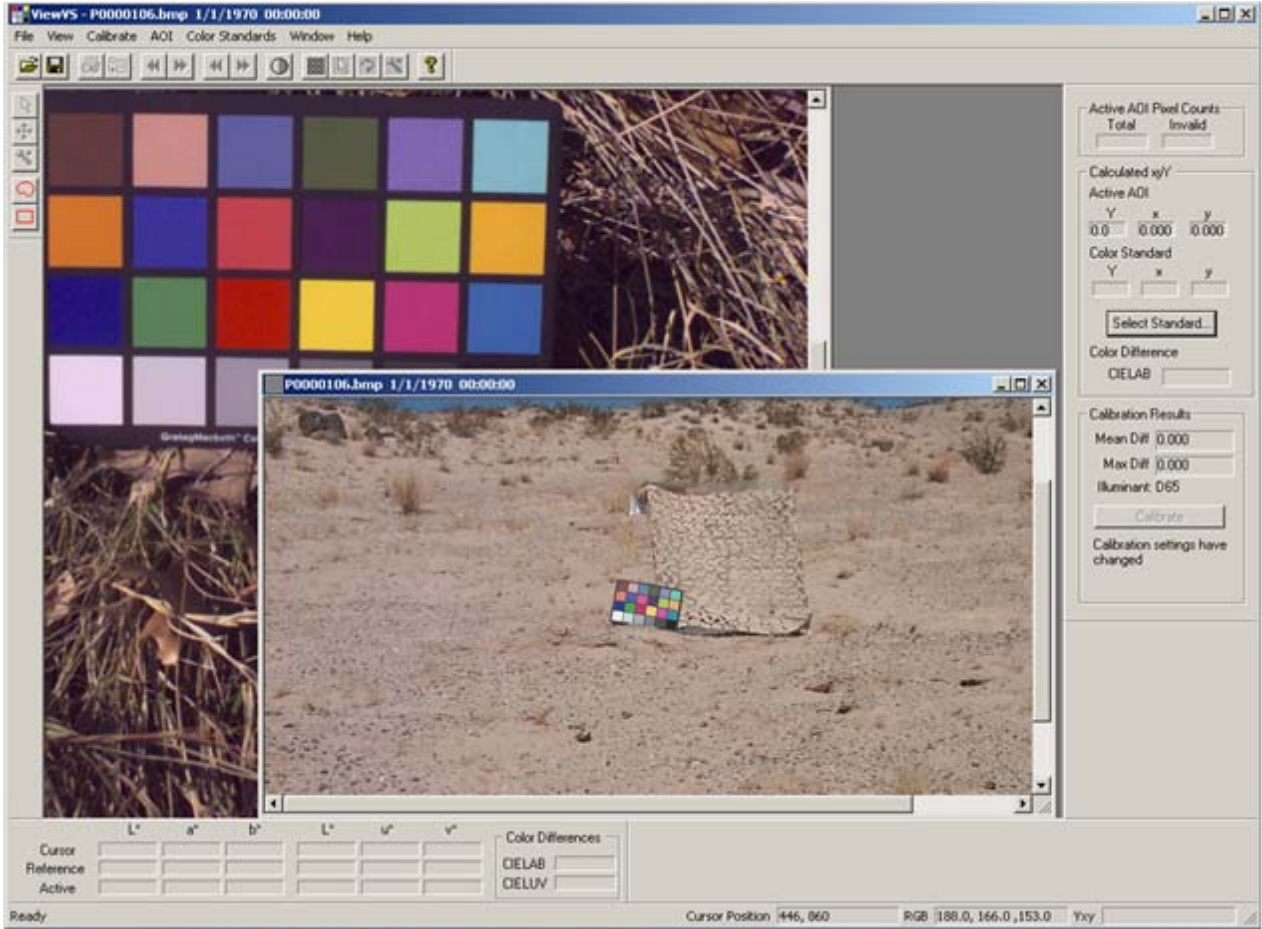
PC-based

System Requirements Include:

- ⇒ Windows 95, 98, 2000, NT, or Me
- ⇒ 200MHz Processor or higher
- ⇒ 32 Mb RAM
- ⇒ ~5 Mb free on hard drive

- Calibrates and analyzes your RGB images
- Accepts stored digital imagery from your imaging sensor
- Supports all standard color digital imagery formats
- Addresses calibration with virtually any color chart geometry
- Provides for user-designated area(s) of interest
- Allows for export of analysis results to MS Excel

- Uses either measured or user-provided illuminant and surface reflectance from a standard color panel in the scene to compute:
 - CIELAB and CIELUV coordinates
 - Color differences
 - Calibrated image sequences collected under the same conditions
 - Removes non-linear gamma correction effects applied by the camera



Headquarters
P.O. Box 346
Calumet, MI 49913
contact: Marshall R. Weathersby
ph: +1-906-337-3360
fax: +1-906-337-0023
weathersby@signatureresearchinc.com

Huntsville Operations
6767 Old Madison Pike, Ste. 440
Huntsville, AL 35806
contact: Hugh Griffis
ph: +1-256-971-9393
fax: +1-256-971-9207
griffis@signatureresearchinc.com